



TSUNAMI EVACUATION MAP

IPAN/ TALOFOFO, GUAM



IF YOU FEEL A STRONG EARTHQUAKE:

- Drop, Cover, and Hold On
- When the shaking stops, move to safe zone
- DO NOT wait for an official warning
- Stay away from coastal areas until officials issue an "all clear"

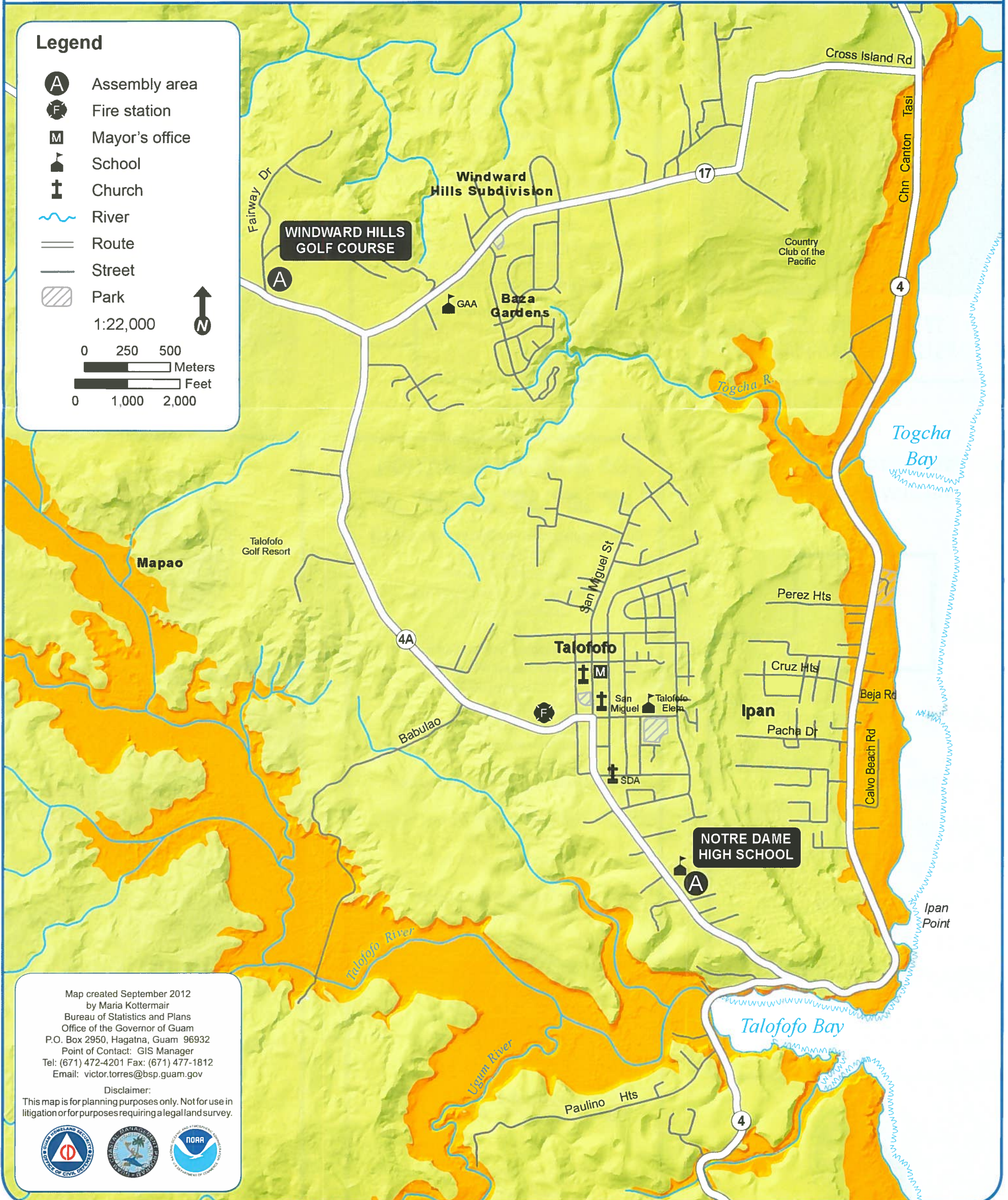
A local tsunami can arrive in 15 to 20 minutes!

<p>A Assembly Area or Safe Ground</p> <p>Safe Zone</p> <p>Proceed to this area for all tsunami warnings or if you feel a strong earth-</p>
<p>Evacuation Zone</p> <p>Evacuate from this area for all tsunami warnings or if you feel a strong earthquake. Move inland and to higher ground or proceed to the 3rd floor or higher of a tall reinforced concrete building.</p>

Legend

- Assembly area
- Fire station
- Mayor's office
- School
- Church
- River
- Route
- Street
- Park

1:22,000



Map created September 2012 by Maria Kottermair
Bureau of Statistics and Plans
Office of the Governor of Guam
P.O. Box 2950, Hagatna, Guam 96932
Point of Contact: GIS Manager
Tel: (671) 472-4201 Fax: (671) 477-1812
Email: victor.torres@bsp.guam.gov

Disclaimer:
This map is for planning purposes only. Not for use in litigation or for purposes requiring a legal land survey.

