

TSUNAMI EVACUATION MAP

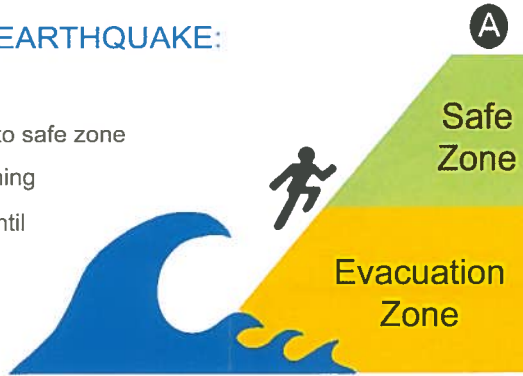
INARAJAN, GUAM



IF YOU FEEL A STRONG EARTHQUAKE:

- Drop, Cover, and Hold On
- When the shaking stops, move to safe zone
- DO NOT wait for an official warning
- Stay away from coastal areas until officials issue an "all clear"

A local tsunami can arrive in 15 to 20 minutes!



A Assembly Area or Safe Ground

Safe Zone

Proceed to this area for all tsunami warnings or if you feel a strong earth-

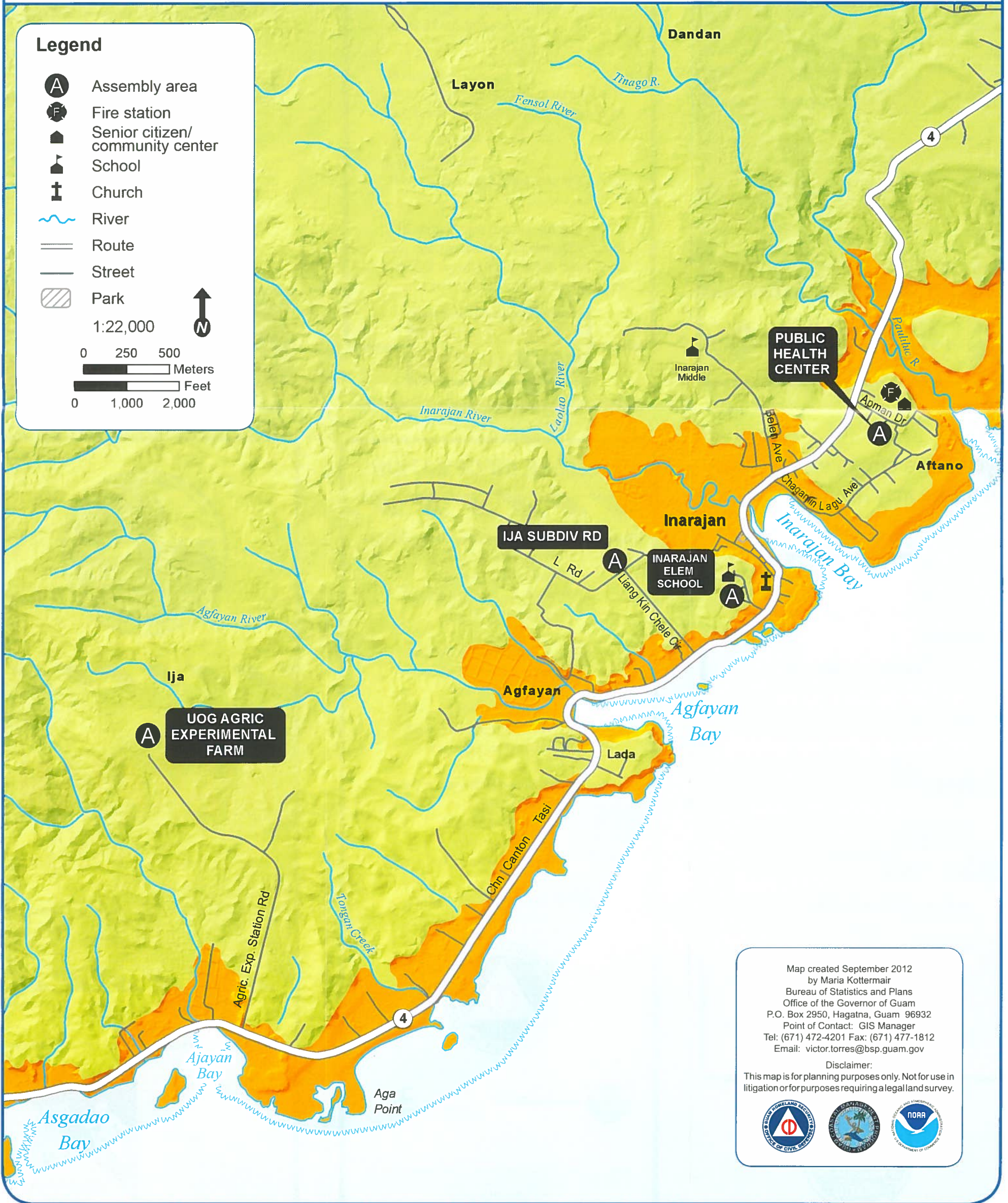
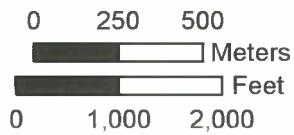
Evacuation Zone

Evacuate from this area for all tsunami warnings or if you feel a strong earthquake. Move inland and to higher ground or proceed to the 3rd floor or higher of a tall reinforced concrete building.

Legend

- A** Assembly area
- F** Fire station
- Senior citizen/ community center
- School
- Church
- River
- Route
- Street
- Park

1:22,000



Map created September 2012
 by Maria Kottermair
 Bureau of Statistics and Plans
 Office of the Governor of Guam
 P.O. Box 2950, Hagatna, Guam 96932
 Point of Contact: GIS Manager
 Tel: (671) 472-4201 Fax: (671) 477-1812
 Email: victor.torres@bsp.guam.gov

Disclaimer:
 This map is for planning purposes only. Not for use in litigation or for purposes requiring a legal land survey.

